

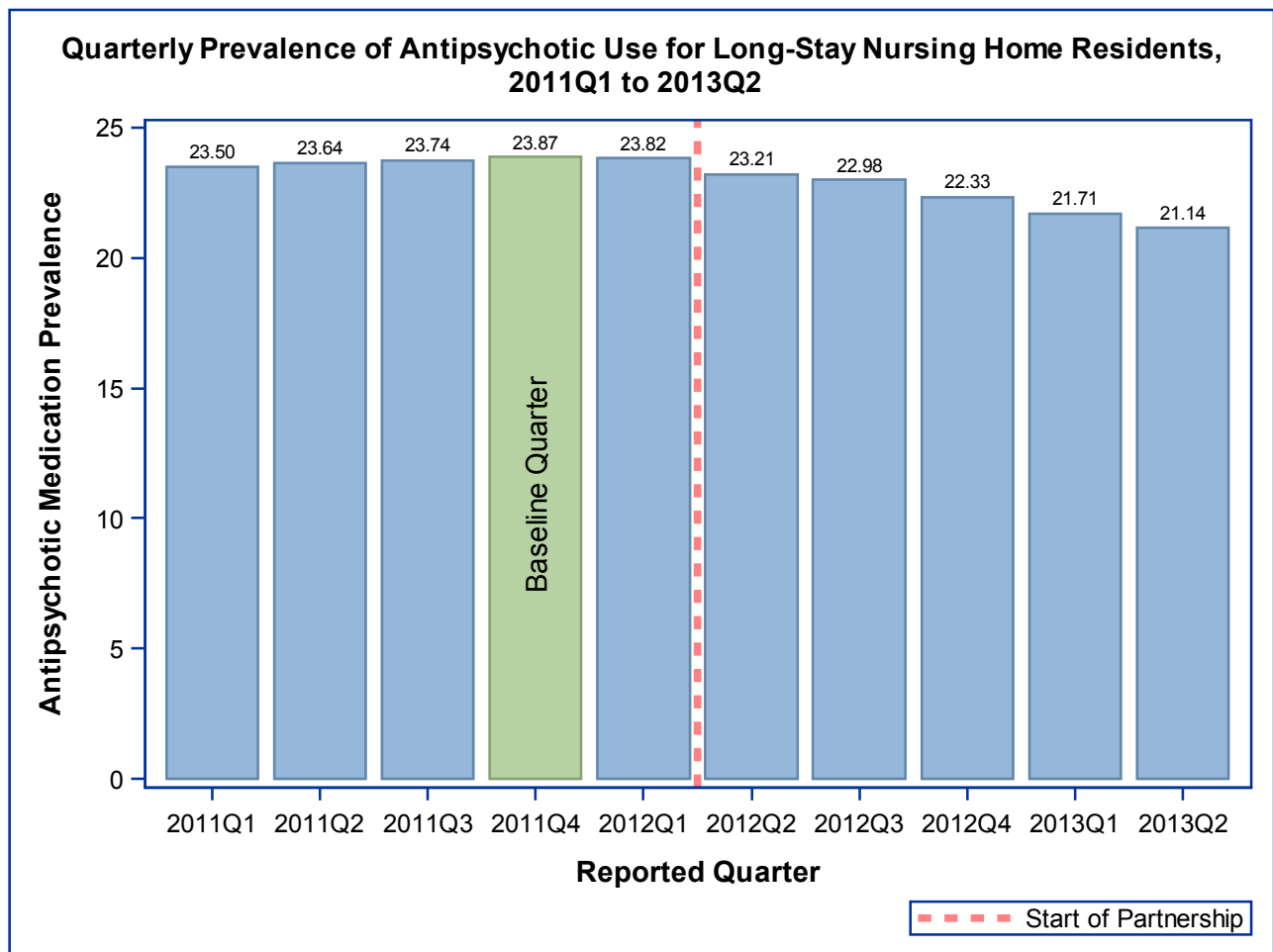
Partnership to Improve Dementia Care in Nursing Homes Antipsychotic Drug use in Nursing Homes Trend Update

The National Partnership to Improve Dementia Care in Nursing Homes is committed to improving the quality of care for individuals with dementia living in nursing homes. The Partnership has a mission to deliver health care that is person-centered, comprehensive and interdisciplinary with a specific focus on protecting residents from being prescribed antipsychotic medications unless there is a valid, clinical indication and a systematic process to evaluate each individual's need. The Centers for Medicare & Medicaid Services (CMS) promotes a multidimensional approach that includes; research, partnerships and state-based coalitions, revised surveyor guidance, training for providers and surveyors and public reporting.

CMS is tracking the progress of the Partnership by reviewing publicly reported measures. The official measure of the Partnership is the percent of long-stay nursing home residents who are receiving an antipsychotic medication, excluding those residents diagnosed with schizophrenia, Huntington's Disease or Tourette's Syndrome. In 2011Q4 23.9% of long-stay nursing home residents were receiving an antipsychotic medication; since then there has been a decrease of 11.4% to 21.1% in 2013Q2. Success has varied by state and CMS region, with some states and regions having seen a reduction of greater than 15%.

A three-quarter measure is posted to the Nursing Home Compare website at www.medicare.gov/nursinghomecompare. The long-stay measure on Nursing Home Compare, is the exact same measure as below, except each facility's score is averaged over the last three quarters in order to give consumers information on the past history of each facility.

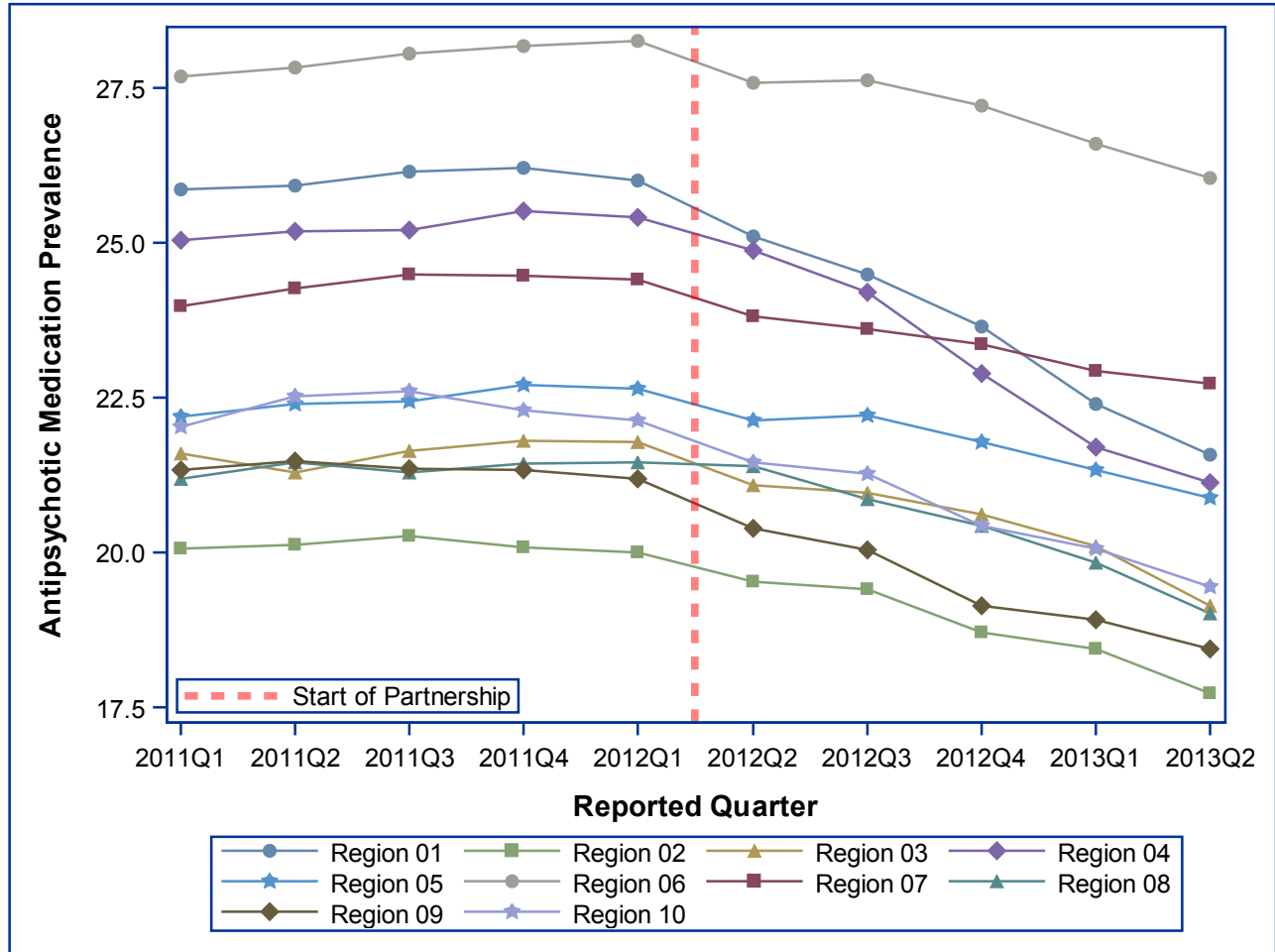
For more information on this National Partnership, please send correspondence to dnh_behavioralhealth@cms.hhs.gov.



Partnership to Improve Dementia Care in Nursing Homes Antipsychotic Drug use in Nursing Homes Trend Update

Quarterly Prevalence of Antipsychotic Use for Long-Stay Residents, CMS Regions 2011Q1 to 2013Q2

CMS Region- and State-specific data are displayed below. These data show the change in the single-quarter prevalence of antipsychotic medication use amongst long-stay residents since 2011Q1 and shows the change since the start of the Partnership



Region	2011Q1	2011Q2	2011Q3	2011Q4	2012Q1	2012Q2	2012Q3	2012Q4	2013Q1	2013Q2	Percentage point difference (2011Q4 to 2013Q2)	Percent change
National	23.50	23.64	23.74	23.87	23.82	23.21	22.98	22.33	21.71	21.14	-2.73	-11.43%
Region 01	25.88	25.94	26.16	26.22	26.02	25.10	24.49	23.66	22.41	21.59	-4.63	-17.65%
Region 02	20.07	20.12	20.27	20.10	20.00	19.52	19.42	18.71	18.44	17.74	-2.36	-11.73%
Region 03	21.60	21.31	21.64	21.81	21.80	21.08	20.98	20.62	20.10	19.14	-2.67	-12.23%
Region 04	25.05	25.20	25.21	25.51	25.42	24.88	24.20	22.90	21.70	21.14	-4.37	-17.14%
Region 05	22.19	22.40	22.45	22.71	22.65	22.14	22.22	21.78	21.34	20.88	-1.83	-8.04%
Region 06	27.69	27.83	28.05	28.19	28.27	27.59	27.62	27.22	26.61	26.05	-2.13	-7.57%
Region 07	23.98	24.27	24.50	24.47	24.42	23.82	23.62	23.36	22.93	22.72	-1.75	-7.14%
Region 08	21.20	21.47	21.30	21.44	21.45	21.40	20.87	20.45	19.84	19.03	-2.41	-11.26%
Region 09	21.33	21.48	21.36	21.34	21.19	20.40	20.05	19.16	18.92	18.44	-2.90	-13.57%
Region 10	22.03	22.54	22.60	22.30	22.14	21.47	21.28	20.44	20.07	19.46	-2.84	-12.73%

Partnership to Improve Dementia Care in Nursing Homes
Antipsychotic Drug use in Nursing Homes Trend Update
Quarterly Prevalence of Antipsychotic Use for Long-Stay Residents, States 2011Q1 to 2013Q2

State	2011Q1	2011Q2	2011Q3	2011Q4	2012Q1	2012Q2	2012Q3	2012Q4	2013Q1	2013Q2	Rank in 2013Q2 (lower=better)	Percentage point difference (2011Q4-2013Q2)	Percent change
ALABAMA	27.09	26.95	27.45	27.32	27.47	26.50	26.04	23.98	22.88	22.24	39	-5.08	-18.60%
ALASKA	17.87	15.61	15.14	13.74	13.38	13.01	13.65	12.41	12.54	11.84	2	-1.90	-13.81%
ARIZONA	22.10	22.35	22.51	22.75	22.70	21.65	21.63	20.87	20.43	20.22	25	-2.53	-11.10%
ARKANSAS	25.72	25.72	26.95	26.12	26.14	25.31	25.85	25.47	25.13	24.40	46	-1.72	-6.57%
CALIFORNIA	21.59	21.74	21.61	21.56	21.35	20.42	20.15	19.18	18.97	18.38	14	-3.18	-14.74%
COLORADO	19.50	19.84	19.66	19.90	19.90	20.33	19.58	19.39	18.50	17.46	12	-2.44	-12.26%
CONNECTICUT	25.72	25.78	26.07	26.04	25.75	25.05	24.32	23.21	22.38	21.57	32	-4.47	-17.16%
DELAWARE	21.57	21.12	20.96	21.30	21.81	22.55	21.93	20.85	17.99	16.76	8	-4.53	-21.29%
DISTRICT OF COLUMBIA	20.67	21.41	20.00	19.98	19.43	18.75	19.36	18.17	17.42	17.60	13	-2.39	-11.94%
FLORIDA	23.92	24.25	24.28	24.48	24.61	23.83	23.45	23.28	22.70	22.11	37	-2.37	-9.68%
GEORGIA	27.88	28.40	28.41	28.65	28.71	28.04	27.10	24.17	22.75	21.81	34	-6.84	-23.88%
HAWAII	13.68	11.44	12.22	12.45	13.48	15.32	13.17	11.71	10.98	11.44	1	-1.01	-8.11%
IDAHO	25.96	26.37	25.69	25.34	26.42	25.11	24.50	23.91	23.07	21.93	35	-3.42	-13.48%
ILLINOIS	25.56	26.02	25.80	25.70	25.59	25.34	25.70	25.48	24.97	25.18	49	-0.52	-2.01%
INDIANA	22.68	23.01	23.60	24.03	24.12	22.89	23.10	22.19	21.68	20.87	29	-3.16	-13.15%
IOWA	21.53	22.21	22.26	22.34	22.02	21.66	21.05	20.56	20.21	20.16	24	-2.18	-9.76%
KANSAS	25.98	26.13	26.54	26.11	26.09	25.19	25.28	25.06	24.18	23.87	44	-2.24	-8.59%
KENTUCKY	25.59	25.49	25.21	25.98	25.96	25.19	24.37	23.15	21.94	22.01	36	-3.97	-15.28%
LOUISIANA	30.09	29.70	29.85	29.72	29.67	29.13	28.95	28.63	27.83	27.01	50	-2.71	-9.13%
MAINE	25.37	26.40	26.69	27.24	26.89	25.94	25.07	24.20	22.56	21.69	33	-5.55	-20.37%
MARYLAND	19.36	19.53	19.79	19.79	19.64	18.54	17.82	17.69	17.31	16.71	7	-3.08	-15.56%
MASSACHUSETTS	26.84	26.58	26.70	26.72	26.59	25.43	25.09	24.49	22.94	22.24	40	-4.48	-16.76%
MICHIGAN	16.34	16.24	16.04	16.39	16.43	15.84	15.96	15.54	14.90	14.41	3	-1.98	-12.09%
MINNESOTA	19.06	18.88	18.97	19.03	18.75	18.06	18.00	17.99	17.95	17.28	10	-1.75	-9.20%
MISSISSIPPI	27.02	26.56	26.81	26.58	26.27	26.57	26.13	25.33	24.69	24.41	47	-2.16	-8.14%
MISSOURI	25.44	25.51	25.98	26.14	26.04	25.30	25.17	24.86	24.65	24.39	45	-1.76	-6.72%
MONTANA	21.39	21.58	22.04	21.48	21.47	19.55	19.71	19.53	19.66	19.15	20	-2.33	-10.84%
NEBRASKA	22.42	22.68	22.40	22.33	22.92	22.60	22.61	22.91	22.52	22.24	38	-0.09	-0.41%
NEVADA	20.23	22.23	20.74	20.27	20.46	21.12	19.75	20.20	20.09	20.42	27	0.15	0.74%
NEW HAMPSHIRE	25.70	25.73	25.40	25.53	25.05	23.97	23.82	23.68	22.74	21.14	31	-4.39	-17.19%
NEW JERSEY	17.36	17.02	18.14	17.96	17.67	17.55	17.44	17.06	16.61	15.86	4	-2.10	-11.69%
NEW MEXICO	20.77	22.44	22.26	21.67	22.00	20.01	20.43	22.22	20.32	20.71	28	-0.96	-4.43%
NEW YORK	21.70	21.99	21.61	21.31	21.44	20.83	20.61	19.75	19.55	18.92	18	-2.39	-11.22%
NORTH CAROLINA	20.64	21.12	20.79	21.45	21.27	20.70	19.94	18.03	16.45	15.98	5	-5.47	-25.49%
NORTH DAKOTA	19.82	20.82	21.37	21.30	21.17	20.63	20.44	19.84	19.14	18.52	15	-2.78	-13.06%
OHIO	24.40	24.88	25.00	25.45	25.44	25.03	24.83	24.49	24.06	23.29	42	-2.16	-8.47%
OKLAHOMA	26.29	26.72	26.82	27.32	27.48	27.27	26.64	25.54	23.04	22.65	41	-4.67	-17.10%
OREGON	19.68	20.64	20.99	21.48	21.34	20.01	19.94	19.25	19.15	18.64	16	-2.85	-13.25%
PENNSYLVANIA	22.11	21.63	22.09	22.30	22.17	21.69	21.67	21.08	20.49	19.40	22	-2.91	-13.04%
RHODE ISLAND	23.27	22.96	23.83	23.99	23.86	23.12	21.66	20.21	20.29	19.33	21	-4.66	-19.43%
SOUTH CAROLINA	20.91	20.56	20.54	20.70	20.57	20.73	20.23	18.32	17.23	16.92	9	-3.78	-18.28%
SOUTH DAKOTA	21.95	21.82	21.75	21.52	21.47	21.31	21.38	20.46	20.00	18.75	17	-2.77	-12.88%
TENNESSEE	29.27	29.25	29.52	29.95	29.28	28.97	27.73	27.16	25.02	23.87	43	-6.08	-20.31%
TEXAS	28.29	28.41	28.51	28.85	28.93	28.20	28.34	27.97	27.90	27.34	51	-1.51	-5.25%
UTAH	25.47	26.86	24.69	27.11	26.94	27.11	26.34	26.42	24.98	24.54	48	-2.57	-9.48%
VERMONT	23.95	25.46	26.14	25.40	25.73	26.23	24.90	23.40	20.29	20.22	26	-5.18	-20.38%
VIRGINIA	22.47	22.45	22.85	23.05	22.89	21.83	21.91	22.08	22.08	21.02	30	-2.03	-8.80%
WASHINGTON	22.40	22.85	23.01	22.33	21.78	21.71	21.57	20.63	20.21	19.71	23	-2.61	-11.70%
WEST VIRGINIA	21.00	20.10	20.28	20.49	21.52	20.43	20.70	20.39	19.77	19.01	19	-1.48	-7.24%
WISCONSIN	19.04	18.66	18.66	19.05	18.92	18.89	18.96	18.04	17.67	17.41	11	-1.64	-8.60%
WYOMING	20.70	17.82	18.40	16.82	16.91	19.43	16.83	17.52	16.95	16.48	6	-0.35	-2.05%